


After downloading the zip software file, extract the file to a desired location on your PC.

You can personally modify the “FastAlign 5100Pro Satellite List” to update the the satellite data (TP Frequency, Symbol Rate, Polarity, & LNBF Frequency) in Excel spreadsheet. After doing so, please save the file at a desired location.

Get Started

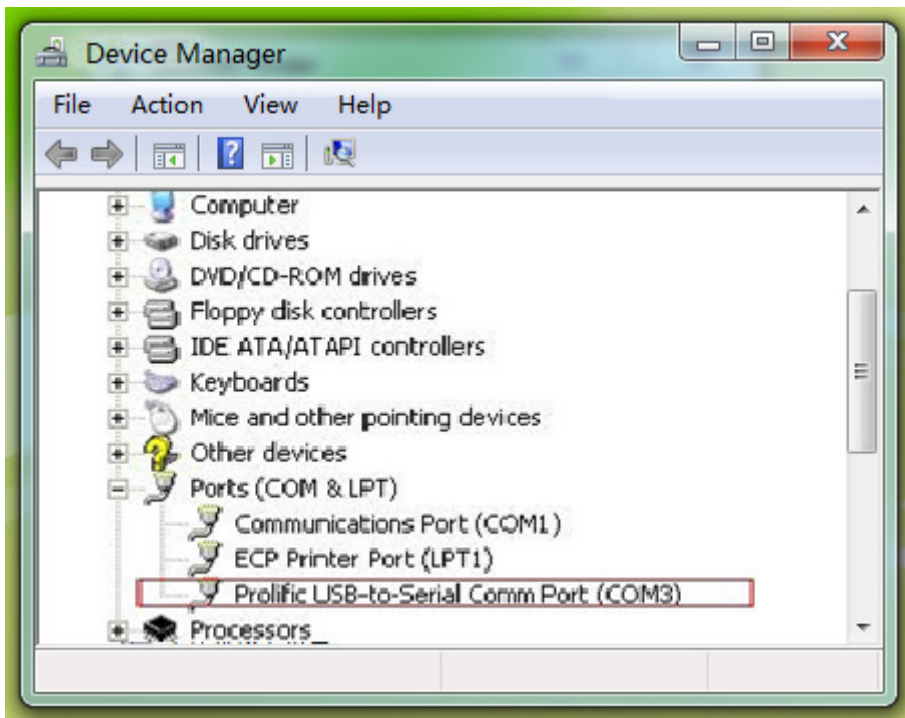
Before you get started, you will need to install the PL2303 driver on your PC in order to be able to run the satellite loader. Follow simple steps below to install the driver.

1. Installing the PL2303 Driver

 PL2303_Prolific_DriverInstaller_v1210

Install the driver by double clicking on the “PL2303_Prolific_DriverInstaller_v1210”. Follow the instructions to fully install the driver.

2. Finding The Proper Port Setting



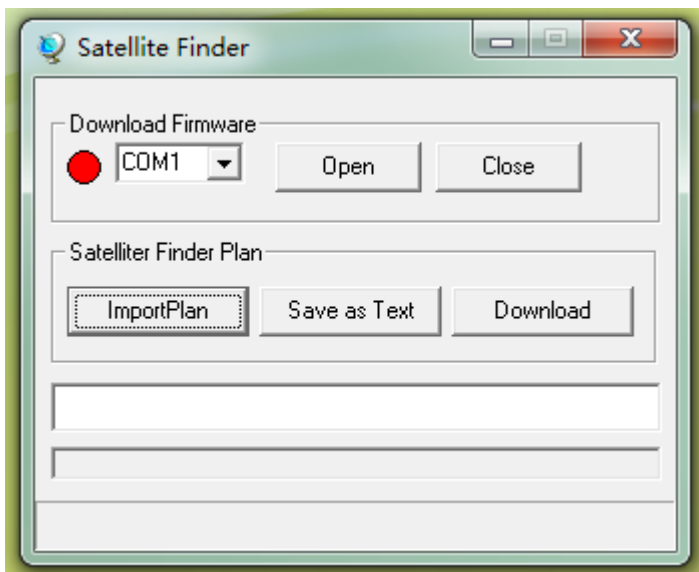
Using the data cable supplied by your 5100Pro meter, connect the 5100Pro to your PC and power on the meter. Go to ‘Control Panel’ – ‘Device manager’

Under the Ports (COM&LPT) item, you will see ‘Prolific USB-to-serial Com Port (COM?)’

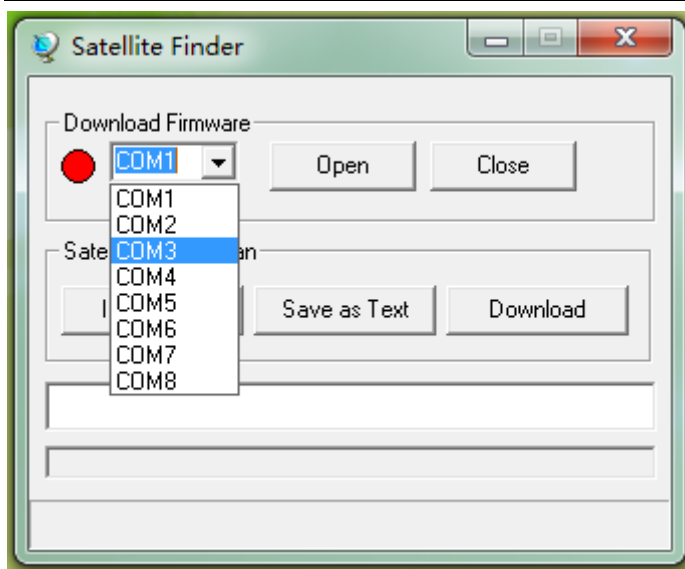
****Remember the COM port number, as you will need to set this up in the loader in steps below.****

3. Open the folder “Software & Satellite List”

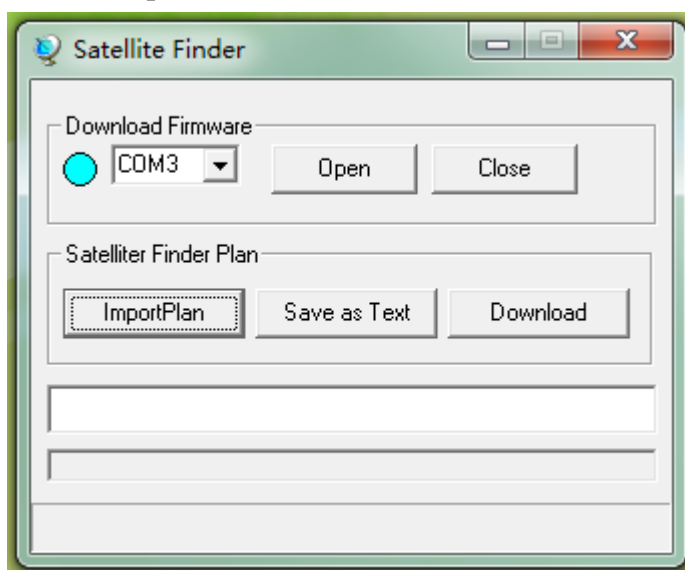
Double click on “Satellite List Loader – SOFTWARE”. You will get a display like the window below.



Change the COM port to the COM# displayed on your screen in the previous step.



4. Import The Plan



Click on “ImportPlan” button on the satellite loader software. Choose the file “FastAlign 5100Pro Satellite List”

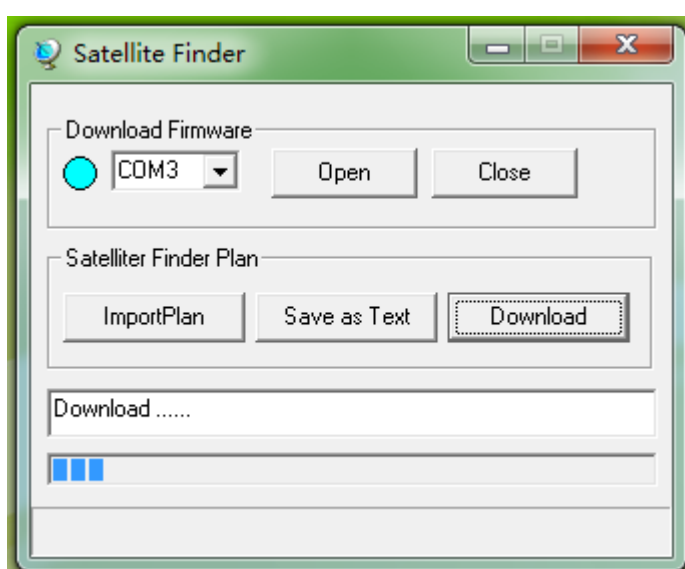
5. Power Off The Meter

Power off your meter by pressing the red “Power” button on the meter.

6. Get Your Meter Ready To Enter The Program Mode

Hold down the “Load” button, while pressing the red “Power” button. This will enter your meter in the program mode.

7. Download Satellite List To Meter



Click on “Download”. This will transfer the satellite list onto the satellite meter. Please be patient as this may take a few minutes. After successful loading, the software will display “End” and the meter will shut down.

8. Finalizing Your Transfer

Disconnect the meter from your PC and turn on the meter by pressing the red “Power” button on the meter. Once the meter is turned on, enter the code “9876”. This step will finalize the transfer and the installation of the updated satellite list and the meter will turn off. Turn the meter on by pressing the red “Power” button. Your meter is now programmed with your updated satellite list!